



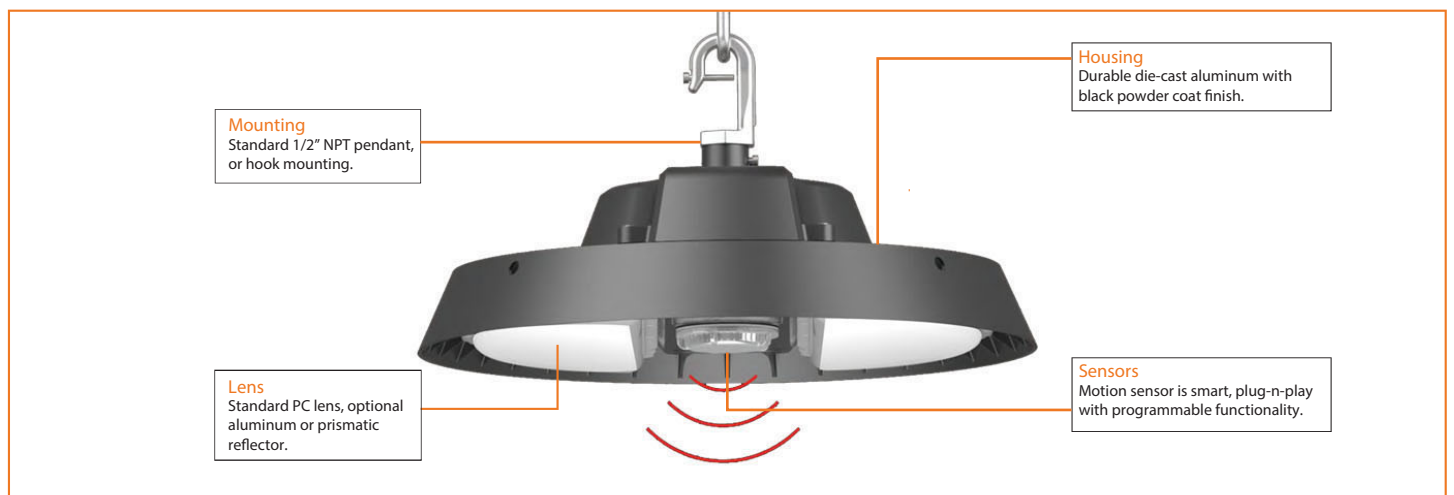
# LED HIGH BAY(HB08)

## Applications:

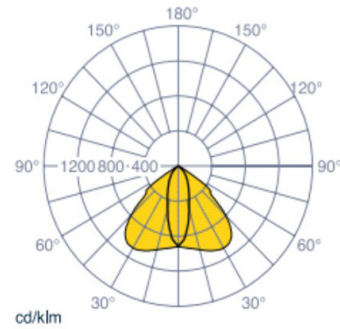
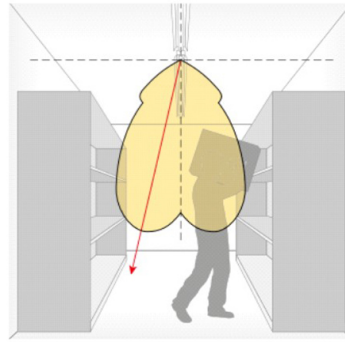
Automobile repair shops, gymnasiums, retail stores, warehouses, and other large facilities.

## FEATURES

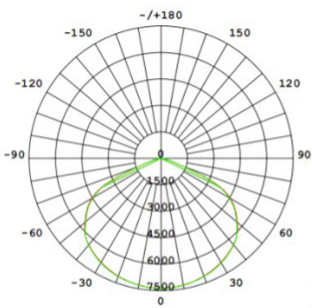
- Efficacy with 170lm/W designed to replace 250W to 800W HID while only consuming 75W to 180W.
- Optional integrated lens of 60°, 90°, 120°, 50\*100°, aluminum reflectors or prismatic reflectors.
- Hook, conduit pendant, steel rope, bracket, pole mount, and indirect mount options.
- PIR sensor can be offered for maximum energy savings.
- Superior color reduction index compared to HPS.
- Operating temperature -40°C to 50°C (-40°F to 122°F)
- Resistant to shock and vibration.
- UL listed.
- Warranty: Optional 5yr and 10yr.



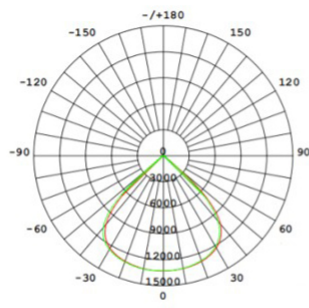
# PHOTOMETRICS



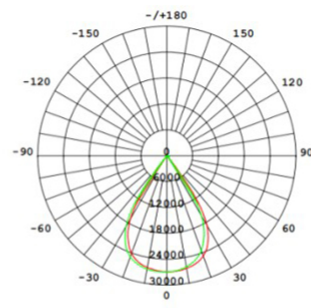
Aisle optic



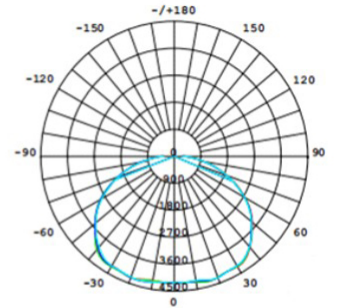
120° WideAngle for  
Factory/Gymnasiums  
/Athletic Center



90° Medium Angnte for  
Large Open Areas



60° Narrow Angle for  
Highly installed areas  
or NarrowAreas

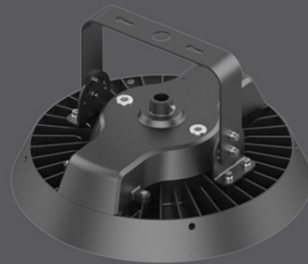


Dome lens

## Various Mounting Options For Easy Installation



Hook  
Mount



Adjustable  
Bracket



Steel Rope  
Pandent mount



Indirect  
Mount



NPT Pipe  
Mount



Pole Mountas  
Post Top Light

# ACCESSORY OPTIONS

Motion Sensor



Daylight Sensor



PC Reflector



Cable With Plug



Plug



Steel Chain



Cable Connector



1/2" NTP to 3/4" NTP Converter



## On-Demand Lighting-World's First Plug&Play Smart LED High Bay Light

Model Number	HB08 75	HB08 100	HB08 120	HB08 145	HB08 180
<b>Input Wattage</b>	75W	100W	120W	145W	180W
<b>Standard</b>	Efficiency (+/- 5%)	<b>Up to 170lm/W</b>			
	Delivered Lumens (+/- 5%)	12750lm	17000lm	20400lm	24650lm
<b>Economic</b>	Efficiency (+/- 5%)	<b>Up to 145lm/W</b>			
	Delivered Lumens (+/- 5%)	10800lm	14500lm	17000lm	21000lm
<b>MH Equivalent Wattage</b>	150W-250W	250W-400W	400W-500W	500W-600W	600W-800W
<b>Input Voltage</b>	100-240VAC/120-277VAC/249-528VAC, 50/60Hz				
<b>CRI</b>	73+ (80+ optional)				
<b>CCT</b>	5000K (3000K, 4000K available)				
<b>Beam Angle</b>	60°, 90°, 120°, Aisle optic 50*100°, Dome Lens				
<b>Power Factor</b>	≥0.95				
<b>IP Rating</b>	IP65				
<b>Working Temp</b>	-40-122°F (-40-50°C)				
<b>Warranty</b>	5 years standard (up to 10 years extra warranty available)				
<b>Certifications</b>	UL us				
<b>Dimming Control</b>	DALI, Zigbee, Bluetooth, Daylight Sensor, Motion Sensor, 0-10V Dimming				

## ORDERING GUIDE

Example: AO-HB08-75-LV-XXK-Y-Y-Y-Y

Fixture Type	Wattage	Voltage	CCT	Beam Angle	Finish	Mounting	Sensor (optional)
AO- <input type="text"/>	<input type="text"/>	<input type="text"/>	<input type="text"/>	<input type="text"/>	<input type="text"/>	<input type="text"/>	<input type="text"/>
<b>HB08</b> High Bay Series	<b>75</b> 75W <b>100</b> 100W <b>120</b> 120W <b>145</b> 145W <b>180</b> 180W	<b>LV</b> 120-277V <b>HV</b> 249-528V	<b>30K</b> 3000K <b>40K</b> 4000K <b>50K</b> 5000K	<b>60D</b> 60° <b>90D</b> 90° <b>120D</b> 120° <b>5010D</b> 50*100 <b>CO</b> Custom Optical	<b>BK</b> Black <b>WH</b> White <b>SV</b> Silver <b>CC</b> Custom Color	<b>Blank</b> 1/2" NPT Hook <b>UB</b> U-Bracket <b>SR</b> Steel Rope <b>NC</b> 1/2"-3/4"NPT Adapter	<b>Blank</b> Without Sensor <b>MS</b> Motion Sensor <b>DS</b> Daylight Sensor <b>ZG</b> Zigbee Control <b>DM</b> 1-10V Dimming <b>DA</b> Dali Control <b>UP</b> Up Light



Alpha Omega Lighting  
www.alphaomegalighting.com

347 N. Church Street • Ripley, WV 25271  
Phone: 304-786-4055 • Email: info@alphaomegalighting.com

Specifications are subject to change without notice.  
Updated 9-04-2020