



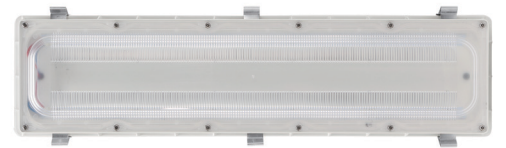
# LED VAPOR TIGHT LINEAR(VT03)

## Applications:

Suitable for parking garages, or commercial, retail and institutional applications including gymnasiums, factories and warehouses.

## FEATURES

- Up to 95W output 12000 lumens with all 2 feet long.
- Two die-cast aluminum separable structures are fixed by elastic sheets.
- Through hole heat dissipation design to achieve longer life.
- Parking garage and low bay photometry for selection.
- Standard 1-10V dimming and optional motion sensor for energy saving.
- Surface or Pendant mounting available.
- Optional emergency battery for emergency needs.
- Operating temperature is  $-40^{\circ}\text{C}$  to  $45^{\circ}\text{C}$  ( $-40^{\circ}\text{F}$  to  $113^{\circ}\text{F}$ ).



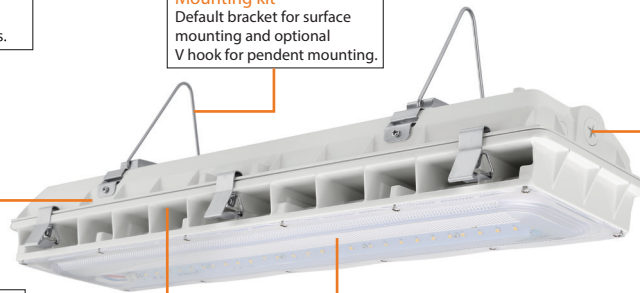
**Housing**  
Two die-cast aluminum separable structures are fixed by elastic sheets.

**Mounting kit**  
Default bracket for surface mounting and optional V hook for pendent mounting.

**3/4 inch threaded hole**  
Support wires coming from the hole for easier wire connectoins.

**Heat Dissipation Through Hole**  
Let air convection to remove heat rapidly. Isolated from the heat source of the power box to achieve longer life

**Photometry**  
Parking garage and low bay photometry for selection.



## PERFORMANCE DATA

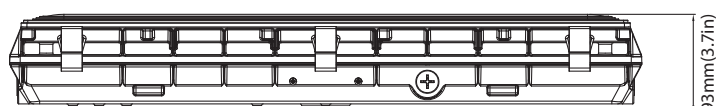
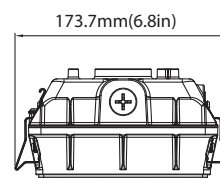
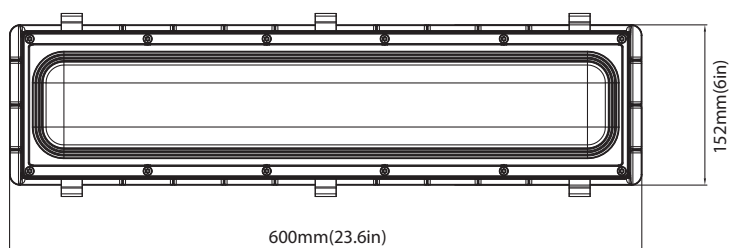
SYSTEM WATTS	PHOTOMETRY	VOLTAGE	4000K(80CRI)		5000K(80CRI)	
			LUMENS	LPW	LUMENS	LPW
45W	Parking Garage	120-277VAC	5400lm	120lm/W	5400lm	120lm/W
70W	Parking Garage	120-277VAC	8400lm	120lm/W	8400lm	120lm/W
95W	Parking Garage	120-277VAC	11400lm	120lm/W	11400lm	120lm/W
45W	Low Bay	120-277VAC	5700lm	127lm/W	5700lm	127lm/W
70W	Low Bay	120-277VAC	8800lm	126lm/W	8800lm	126lm/W
95W	Low Bay	120-277VAC	12000lm	126lm/W	12000lm	126lm/W

## ELECTRICAL DATA

Number Of Drivers	Driver Current (mA)	Nominal Power (W)	INPUT VOLTAGE (V)	CURRENT (Amps)
1	1120	45	120	0.38
		45	208	0.22
		45	240	0.19
		45	277	0.16
1	1750	70	120	0.58
		70	208	0.34
		70	240	0.29
		70	277	0.25
1	2500	95	120	0.79
		95	208	0.46
		95	240	0.40
		95	277	0.34

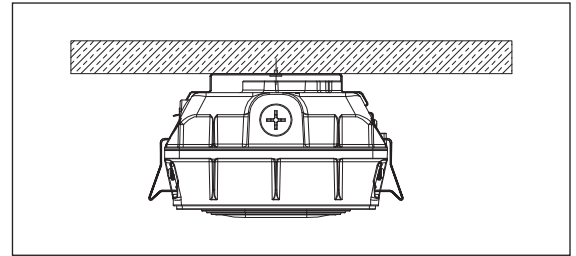
## DIMENSIONS

unit: inch/mm



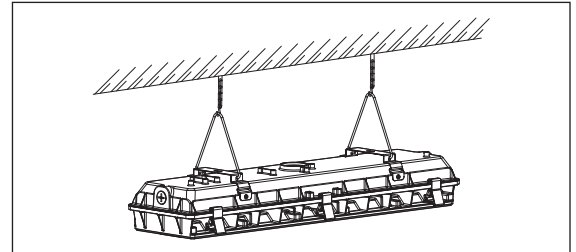
## SURFACE MOUNT (DEFAULT SETTING)

Connect wires (voltage to black, white to common, and green to ground);  
Secure the led module to the housing and fasten six latches, ensuring water does not enter fixture.



## V-HOOK MOUNTING

1. Put the mounting bracket on the housing, tighten it with screws.
2. Fasten the V hook hang it with the chain.



## ORDERING GUIDE

Example: AO-VT03-45-LV-XXK-Y-Y-Y-Y

Fixture Type	Wattage	Voltage	CCT	Finish	Sensor(Option)	Emergency Battery (Option)	Photometry	Internal Code
AO- <input type="text"/>	<input type="text"/>	<input type="text"/>	<input type="text"/>	<input type="text"/>	<input type="text"/>	<input type="text"/>	<input type="text"/>	<input type="text"/>
<b>VT03</b>	<b>45</b> 45W	<b>LV</b> 120-277V	<b>40K</b> 4000K	<b>W</b> White	<b>Blank</b> Without Sensor	<b>B</b> With Emergency Battery	<b>PG</b>	<b>Blank</b>
Vapor Tight	<b>70</b> 70W		<b>50K</b> 5000K	<b>D</b> Dark Bronze	<b>M</b> With Sensor	<b>Blank</b>	Parking Garage	<b>Alphanumeric</b>
Linear Series	<b>95</b> 95W			<b>B</b> Black		Without Emergency Battery	<b>LB</b> Low Bay	

Note: Emergency battery does not support 95W.