



LED VAPOR TIGHT LINEAR (VT03)

Applications:

Suitable for harsh environments, parking garages, water processing plants, and other industrial environments.

FEATURES

Construction:

- Complete housing is sealed against moisture and environmental contaminants
- Two piece die-cast aluminum housing sealed with elastomer seals
- Through hole heat dissipation design to achieve longer life

Optics:

- Up to 95W and 13000 lumens with 2 foot housing
- Adjustable lumen output with four lumen settings 100%, 80%, 60%, 40%
- Selectable color temperature 4000K/5000K
- Parking garage and low bay photometrics, users choice

Electrical:

- Universal 120-277VAC input voltage
- 0-10V dimming standard for a dimming range of 100% to 10%
- Operating temperature is -40°C to 45°C (-40°F to 113°F)

Controls:

- PIR sensor optional

Lifespan:

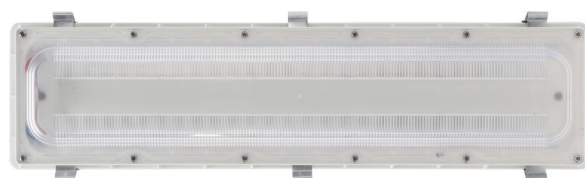
- Estimated 100,000-hour LED lifespan based on IES LM-80 results and TM-21 calculations

Warranty:

- Five-year warranty

Certifications:

- UL cUL wet location listed



95W

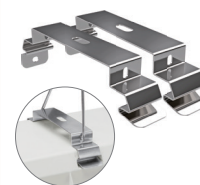


ACCESSORIES (Optional)



PIR Sensor

USE: Sensor can be pre-installed in factory or field installed

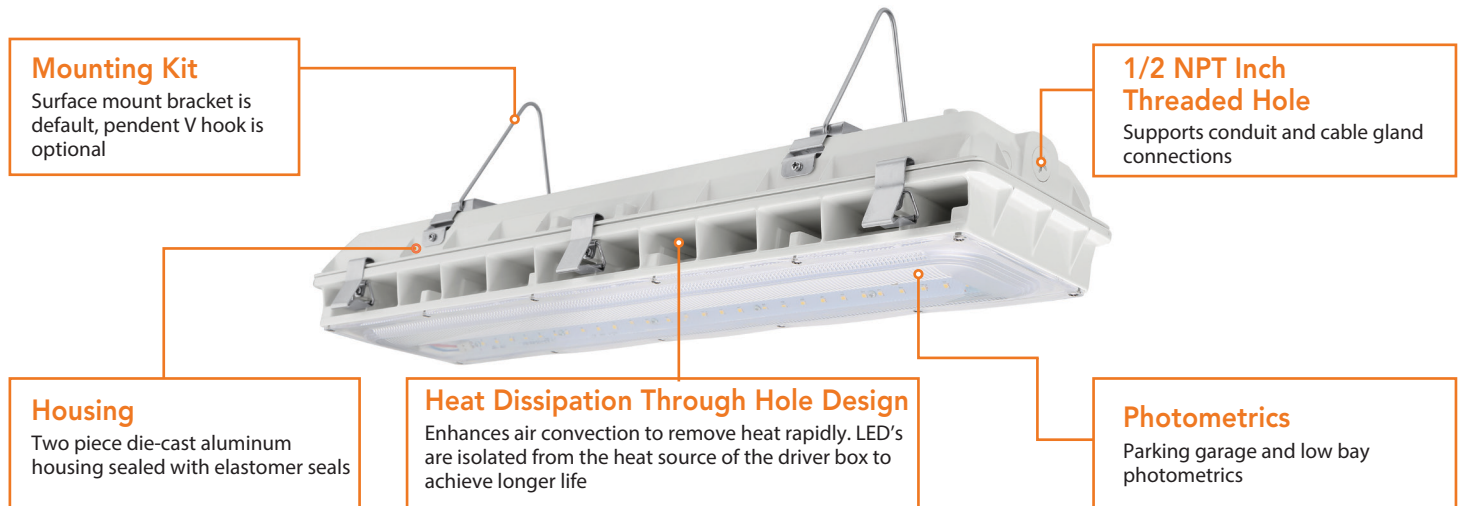
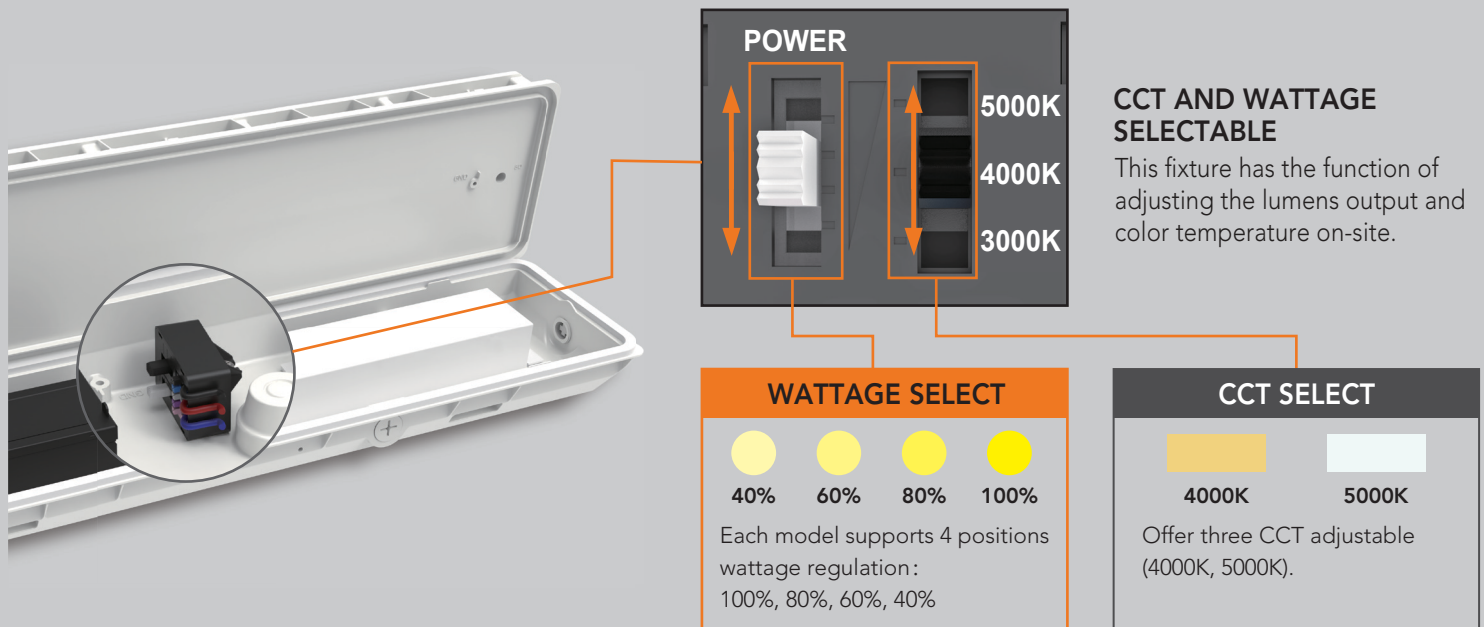


Surface Mounting Brackets (Default)



V-Hook Pendant Mounting





PERFORMANCE DATA

PHOTOMETRY	SYSTEM WATTS	VOLTAGE	LUMENS 4000K(80CRI)	LPW 4000K(80CRI)	LUMENS 5000K(80CRI)	LPW 5000K(80CRI)
PARKING GARAGE	95W	120-277VAC	11400 lm	120 lm/W	11600 lm	122 lm/W
LOW BAY	95W	120-277VAC	12700 lm	134 lm/W	13000 lm	137 lm/W

ADJUSTABLE LUMEN OUTPUT TABLE

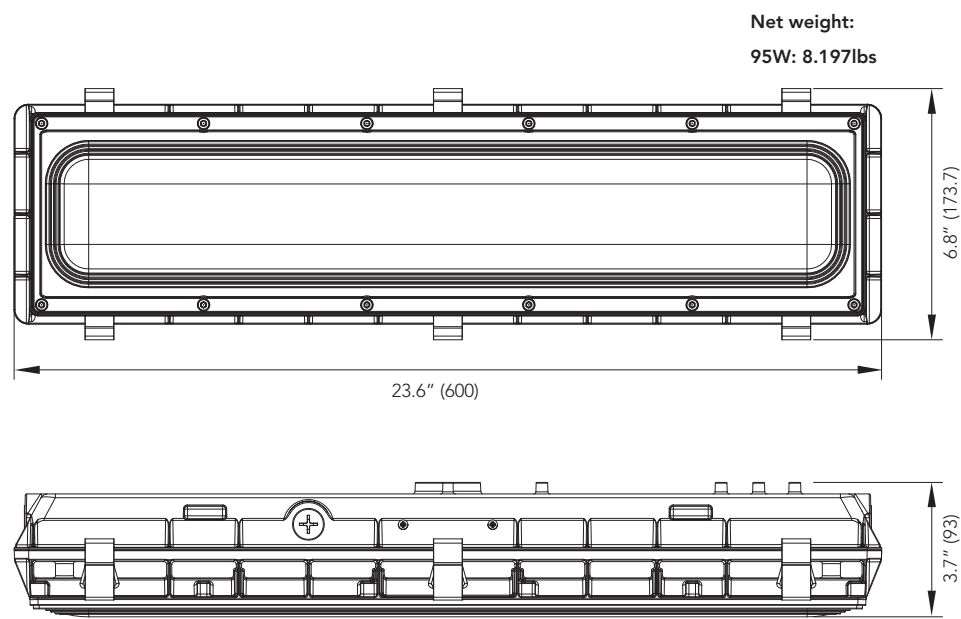
SETTING	CCT	PARKING GARAGE		LOW BAY	
		SETTING WATTS (W)	LUMENS (lm)	SETTING WATTS (W)	LUMENS (lm)
100%	5000K	95	11600	95	13000
80%	5000K	73	9000	73	10000
60%	5000K	57	7000	57	7800
40%	5000K	40	5000	40	5700

ELECTRICAL DATA

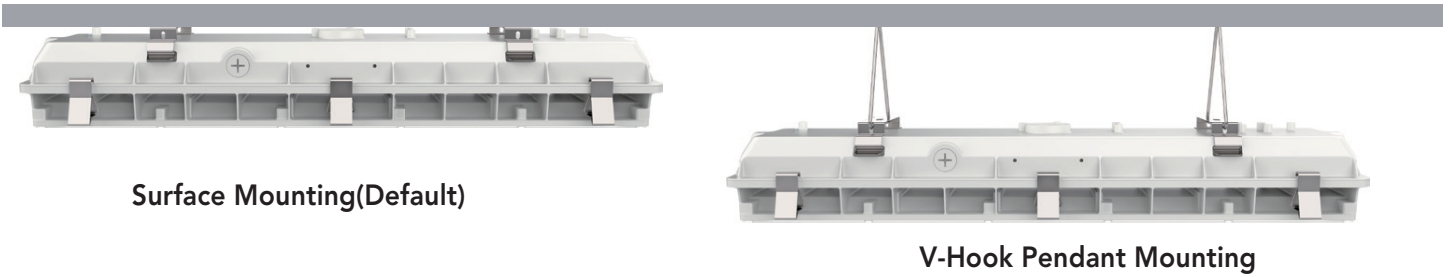
NUMBER OF DRIVERS	DRIVER CURRENT (mA)	NOMINAL POWER (W)	INPUT VOLTAGE (V)	CURRENT (Amps)
1	730	95	120	0.79
		95	208	0.46
		95	240	0.40
		95	277	0.34

DIMENSION

unit: inch/mm



MOUNTING



ORDERING GUIDE

Example: AO-VT03-95-LV-DDK-W-PG-AD

Fixture Type	Wattage	Voltage	CCT	Finish	Sensor(Optional)	Photometry	Lumen Output	Internal Code
AO- <input type="text"/>	<input type="text"/>	<input type="text"/>	<input type="text"/>	<input type="text"/>	<input type="text"/>	<input type="text"/>	<input type="text"/>	<input type="text"/>
VT03 Vapor Tight Linear Series	95 95W	LV 120-277VAC	DDK Adjustable Color Temperature	W White D Dark Bronze B Black	Blank Without Sensor M With Sensor	PG Parking Garage LB Low Bay	AD With Adjustment Dial	Blank Alphanumeric

Actual performance may differ as a result of end-user environment and application. All values are design or calculated values measured in laboratory conditions. Specifications subject to change without notice.



Alpha Omega Lighting
www.alphaomegalighting.com

347 N. Church Street • Ripley, WV 25271
Phone: 304-786-4055 • Email: info@alphaomegalighting.com

Specifications are subject to change without notice.
Updated 10-20-2023