



WALL PACK (WP10)

DESCRIPTION

Slim wall pack is available in two sizes for a variety of applications including building perimeter, entrances, stairways and security lighting. WP10 series of luminaries provides a low-profile architectural style with the power of bright, energy efficient LEDs. It has a rugged aluminum construction with multi-mount capabilities. 0° to +90° tilt adjustments. For a building that has a modern look.

SPECIFICATION FEATURES

Construction

- Sealed die-casting profile for outdoor applications.
- Suitable for applications requiring 3G testing prescribed by ANSI C136.31.

Optics

- Light engines are available in standard 3000K/4000 K and 5000 K (70 CRI) configurations.
- Scalable Lumen Packages from 3,500 to 10,500 Lumens.
- Tempered UV coated flat lens provide outstanding performance, uniformity and glare control.

Electrical

- Standard drivers feature electronic universal voltage (120-277V 50/60Hz) operation.
- Greater than 0.9 power factor, less than 20% harmonic distortion, and is suitable for operation in -40°C to 40°C ambient environments.

Lifespan

- Estimated 50,000-hour LED lifespan based on IES LM-80 results and TM-21 calculations.

Warranty

- Five-year warranty.

Applications

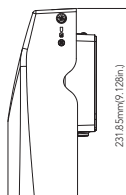
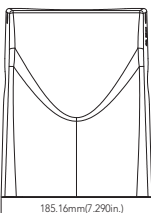
- Security, pathway and perimeter lighting, Building entryways and walkways.



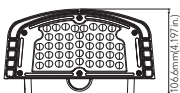
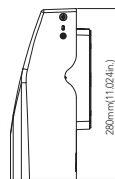
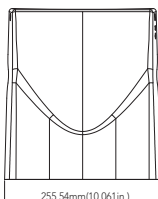
DIMENSIONS

unit: mm/inch

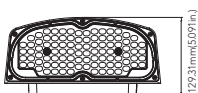
Small size: 27W/40W



Medium size: 67W/80W



Net Weight:
27W: 1.52kg(3.351lb)
40W: 1.80kg(3.968lb)



Net Weight:
67W: 3.32kg(7.319lb)
80W: 3.54kg(7.804lb)



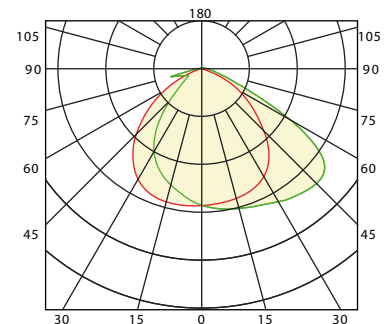
67W/80W



Head tilts to 90degree

27W/40W

PHOTOMETRICS



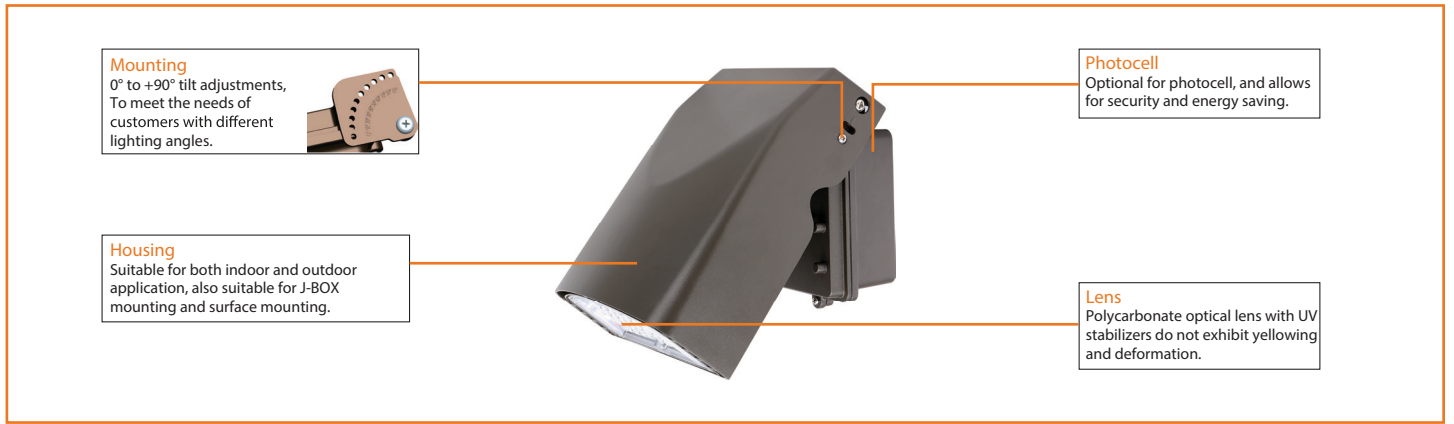
ACCESSORIES



Photocell

No. PC-JL-120-277V

USE: Photocell is field installed or pre-installed in factory by requesting



PERFORMANCE DATA

		3000K(70CRI)		4000K(70CRI)		5000K(70CRI)	
SYSTEM WATTS	VOLTAGE	LUMENS	LPW	LUMENS	LPW	LUMENS	LPW
27W	120-277VAC	3500lm	130 lm/W	3600lm	133 lm/W	3600lm	133 lm/W
40W	120-277VAC/347-480V	5000lm	125 lm/W	5200lm	130 lm/W	5200lm	130 lm/W
67W	120-277VAC/347-480V	8600lm	128 lm/W	8800lm	131 lm/W	8800lm	131 lm/W
80W	120-277VAC	10000lm	125 lm/W	10500lm	131 lm/W	10500lm	131 lm/W

ELECTRICAL DATA

Number Of Drivers	Driver Current (mA)	Nominal Power (W)	INPUT VOLTAGE (V)	CURRENT (Amps)
1	430	27	120	0.23
		27	208	0.13
		27	240	0.11
		27	277	0.10
1	640	40	120	0.33
		40	208	0.19
		40	240	0.17
		40	277	0.14
1	1110	67	120	0.56
		67	208	0.32
		67	240	0.28
		67	277	0.24
1	2120	80	120	0.67
		80	208	0.38
		80	240	0.33
		80	277	0.29

ORDERING GUIDE

Example: AO-WP10-27-LV-XXK-Y-Y-Y

Fixture Type	Power Consumption	Input Voltage	CCT	Finish	Photocell (Option)	Dimmable	Internal Code
AO- <input type="text"/>	<input type="text"/>	<input type="text"/>	<input type="text"/>	<input type="text"/>	<input type="text"/>	<input type="text"/>	<input type="text"/>
WP10 Wall Pack Series	27 27Watts 40 40Watts 67 67Watts 80 80Watts	LV 120-277V	30K 3000K 40K 4000K 50K 5000K	D Dark Bronze B Black W White	P0 120-277V Photocell Blank Without Photocell	D 0-10 Dimmable Blank NON Dimmable	Blank Alphanumeric

Note: The 80W is limited to dimmable.



Alpha Omega Lighting
www.alphaomegalighting.com

347 N. Church Street • Ripley, WV 25271
 Phone: 304-786-4055 • Email: info@alphaomegalighting.com

Specifications are subject to change without notice.
 Updated 9-04-2020