



LED HIGH BAY(HB06)

Applications:

Suitable for commercial, retail and institutional applications including gymnasiums, factories and warehouses.

FEATURES

- Sealed die-casting profile for indoor and outdoor applications.
- Universal voltage of 120-277V&347-480V.
- Best choice for replacing 250W MH and 400W MH.
- Above 80 color rendition index compared to HPS.
- Increase energy savings with bi-level motion sensor.
- Optional emergency battery to serve in accidental situation.
- Operating temperature is -40°C to 50°C (-40°F to 122°F).
- Hook mount, pendant mount and surface mount available.



67W&97W



140W



180W



Housing

Die-cast aluminum housing with heat dissipating fins. Sealed design with silicone strip for use in wet locations.

Photometry

High Bay Photometry formed from high efficiency LEDs and scattering diffuser.

Installation accessory

Available for both hook mounting and surface mounting with bracket(optional). Bracket allows to adjust the direction to illuminate any area you need.

PIR motion sensor

Optional motion sensor allows for security and energy saving.



PERFORMANCE DATA

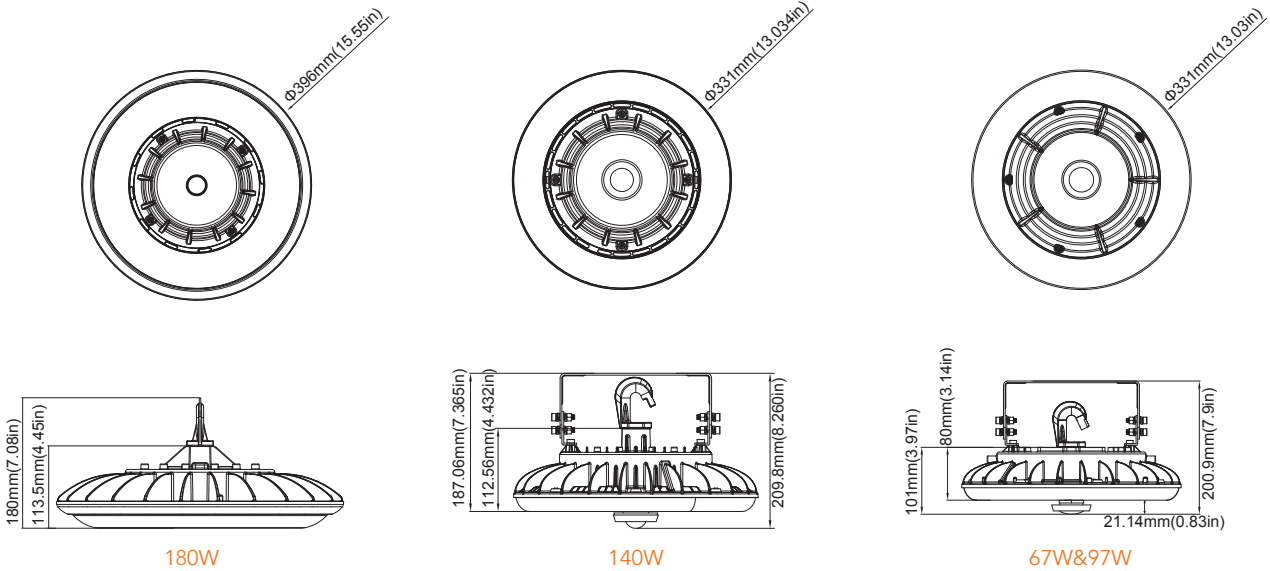
			4000K(80CRI)		5000K(80CRI)	
SYSTEM WATTS	PHOTOMETRY	VOLTAGE	LUMENS	LPW	LUMENS	LPW
67W	High Bay	120-277VAC	9100lm	136lm/W	9100lm	136lm/W
97W	High Bay	120-277VAC	12800lm	132lm/W	12800lm	132lm/W
140W	High Bay	120-277VAC/347-480V	18500lm	132lm/W	18500lm	132lm/W
180W	High Bay	120-277VAC/347-480V	25000lm	132lm/W	25000lm	132lm/W

ELECTRICAL DATA

Number Of Drivers	Driver Current (mA)	Nominal Power (W)	INPUT VOLTAGE (V)	CURRENT (Amps)
1	1650	67	120	0.56
		67	208	0.32
		67	240	0.28
		67	277	0.24
1	2500	97	120	0.81
		97	208	0.47
		97	240	0.40
		97	277	0.35
2	3300	140	120	1.25
		140	208	0.72
		140	240	0.63
		140	277	0.54
	3200	140	347	0.43
		140	480	0.31
2	4800	190	120	1.67
		190	208	0.96
		190	240	0.83
		190	277	0.72
		190	347	0.58
		190	480	0.42

DIMENSIONS

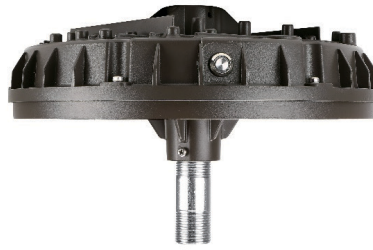
unit: inch/mm



ACCESSORY OPTIONS



Motion Sensor
Integrated motion sensor available for on/off and dimming control for maximum energy savings.



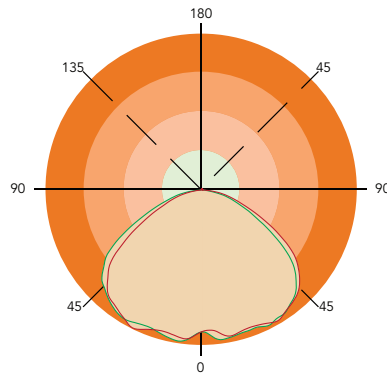
Emergency Box
Emergency battery pack would provide the necessary brightness in emergency situations. Applicable ambient temperature is 10 °C (50 °F) to 40 °C (104 °F).



U-bracket
Use for surface mounting application. Available to adjust the angle of MHB06 to control the direction of irradiation.

PHOTOMETRICS

General



ORDERING GUIDE

Example: AO-HB06-67-LV-XXK-B-Y-Y-Y

Fixture Type AO- <input type="text"/>	Wattage <input type="text"/>	Voltage <input type="text"/>	CCT <input type="text"/>	Finish <input type="text"/>	Sensor (Option) <input type="text"/>	Backup Battery (Option) <input type="text"/>	Internal Code <input type="text"/>
HB06 High Bay Series	67 67W 97 97W 140 140W 180 180W	LV 120-277V HV 347-480V	40K 4000K 50K 5000K	B Black	M With Sensor Blank Without Sensor	B Emergency Battery Blank Without Emergency Battery	Blank Alphanumeric

Note: 67W and 97W are only for 120-277V.