



LED HARSH ENVIRONMENT FLOOD LIGHT (HEF01)

(NON-HAZARDOUS)

Applications:

Ideal for non-hazardous harsh industrial environments such as coal-fired power generation, hydro-electric generation, aggregates, metals, marine and all other industrial applications. Designed for traditional commercial applications such as ports, warehouses, railway, bus terminals, airports, toll roads and dock platforms.

FEATURES

Construction:

- Cast aluminum alloy body with heat exchanger designed to isolate the driver heat from the high efficiency LED's
- Robust design for harsh environments and extended service life
- Corrosive resistant electrostatic power coating to withstand all environments
- Compact design, promotes high lumen output with improved reliability
- IP67 rated for dust and wet locations
- Marine gray is standard color, other colors are optional

Optics:

- Tempered glass diffuser is standard, while polycarbonate is optional
- Designed for high mechanical strength and long-range lighting
- Advanced optical system, polycarbonate lens provides superior uniformity and reduces glare
- Lumen package from 4,000 to 53,000 lumens, efficacy up to 153 lm/W
- Beam angles include 10°, 30°, 60°, 90°, 120° and Asymmetric
- Standard CCT is 5000K, 3000K is optional

Electrical:

- Input power ranging from 30W to 400W
- Operating voltage is 100-277 VAC, 277-480 VAC
- Power Factor >93% @ 277VAC, THD <15%

Ambient Temperature:

- Operating temperature is -40°C to 55°C (-40°F to 131°F)

Mounting:

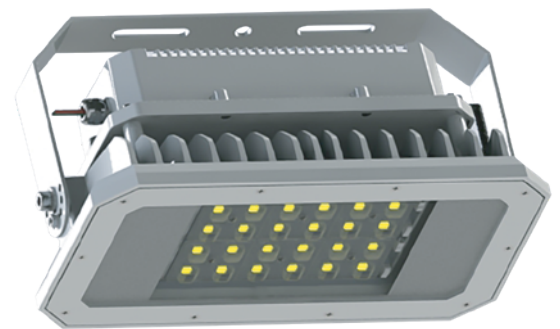
- Surface mount trunnion bracket is standard; unistrut and pipe hangers are optional

Finish:

- Cast aluminum alloy with Marine gray paint is standard

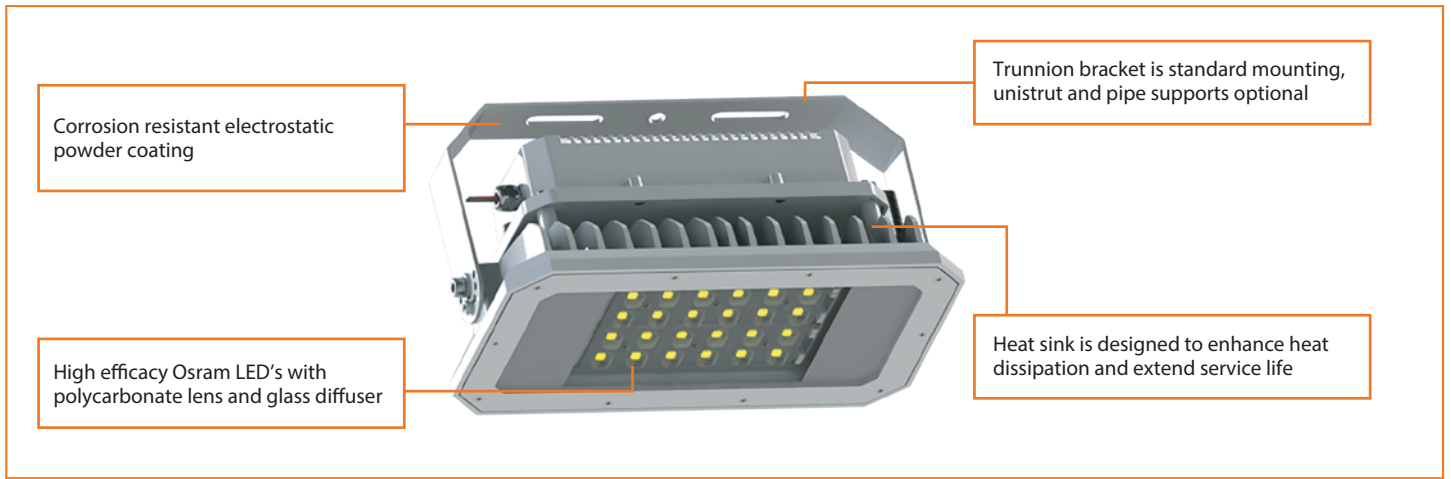
Certifications:

- UL Listed – 1598
- Canada: CSA C22.2, No. 250
- Standard 5-Year Limited Warranty



30W/40W/60W/80W/100W/120/150W/
180W/200W/250W/300W/350W/400W



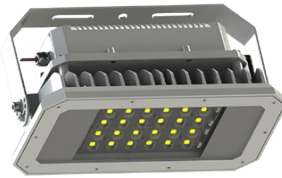


SPECIFICATIONS

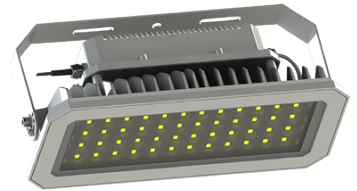
Model	AO-HEF01													
Wattage	30W	40W	60W	80W	100W	120W	150W	180W	200W	250W	300W	350W	400W	
Body Type	1		2		3		4			5				
Body Material	Cast aluminum													
Diffuser Material	4mm Tempered Glass													
Lens Material	Polycarbonate with UV protection													
Finish	Electrostatic Powder Coating													
Installation	Trunnion Bracket, Pipe and Cable Tray Supports													
Weight	3.7 Kg		5 Kg		6 Kg		8.5 Kg			11.5 Kg				
Dimensions (AxBxC)	271x160x169mm		347x180x178mm		419x180x178mm		434x250x195mm			519x330x247mm				
Input Voltage	110-277 VAC, 277-480 VAC													
Operation Frequency	50/60Hz													
Power Factor (at full load)	>0.95			>0.93 @ 277VAC										
Conditions of Use	Altitude: 1500m / Ambient Temperature: -40°C ~ +55°C / Relative Humidity: Up to 100%													
Driver Protection	Short Circuit, Overvoltage, Overcurrent, Overtemperature													
Ingress Rating	IP67 Full													
Impact Rating	IK08													
Surge Protection	UC: 275V - 10Ka (8/20) - 10 KV - Category C													
Color Rendering Index	>80													
Color Temperature (CCT)	5000K Standard, 3000K Optional													
Beam Angle	90°/120° optional						60°			30°				
Light Depreciation Factor	Up to 10% for 60,000h @ 1.0A e Tj=65°C													
Estimated Service Life	(L70) 100,000h @ Tc = 65°C													
Luminous Flux	3,940lm	5,850lm	7,964lm	11,782lm	15,428lm	17,911lm	23,396lm	24,771lm	27,939lm	33,769lm	38,632lm	43,884lm	52,601lm	
Efficacy	146lm/w	136lm/w	151lm/w	143lm/w	153lm/w	132lm/w	143lm/w	140lm/w	141lm/w	139lm/w	144lm/w	133lm/w	133lm/w	
HID Equivalent	70W	70W	100W	150W	250W	250-400W	400W	500W	600W	1000W	1000W	2000W	2000W	



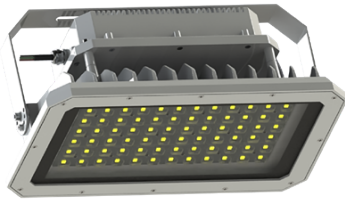
Body 1
30W / 40W / 60W



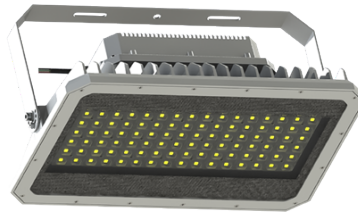
Body 2
80W / 100W



Body 3
120W / 150W

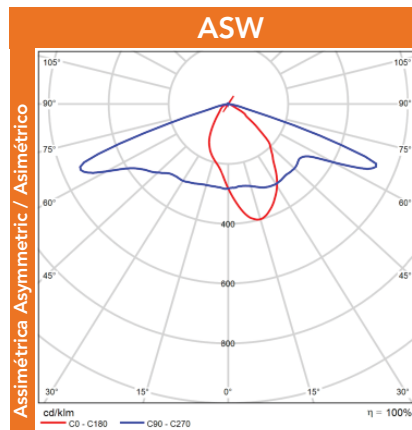
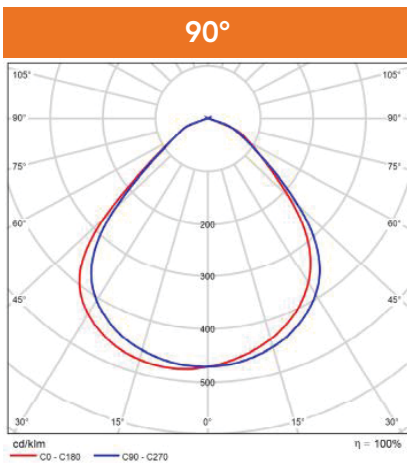
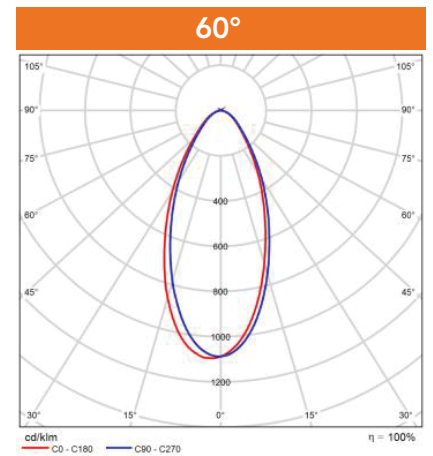
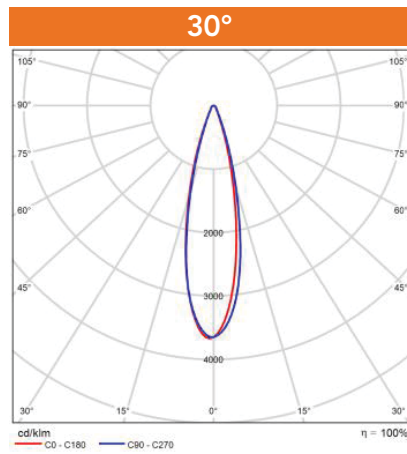
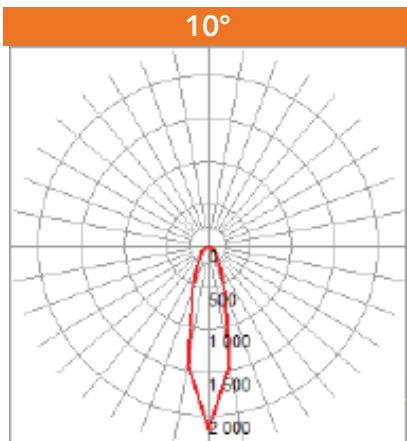


Body 4
180W / 200W / 250W



Body 5
300W / 350W / 400W

PHOTOMETRICS



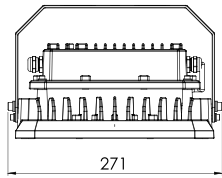
*Candelas for 1000 lumens

10° option available for HEF01-200W to 400W

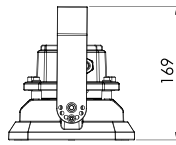
DIMENSIONS

Unit: mm

Body 1

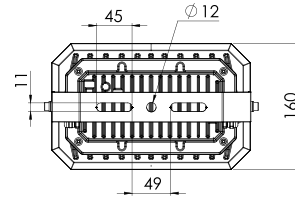


Elevated View



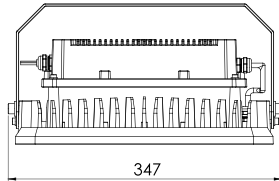
Side View

30W/40W/60W

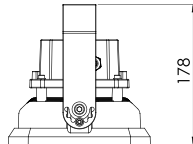


Front View

Body 2

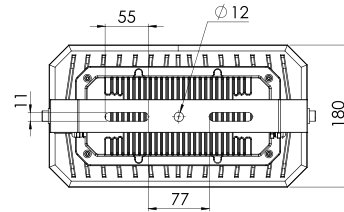


Elevated View



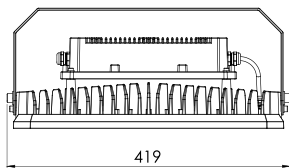
Side View

80W/100W

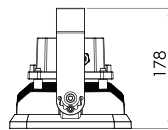


Front View

Body 3

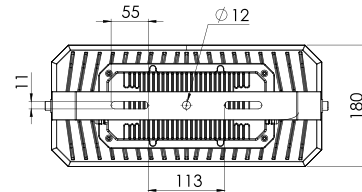


Elevated View



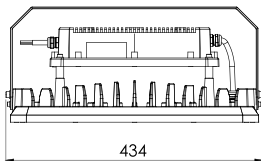
Side View

120W/150W

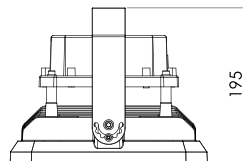


Front View

Body 4

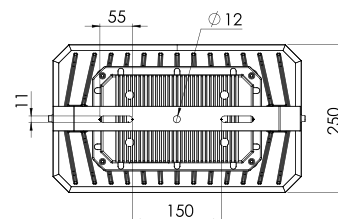


Elevated View



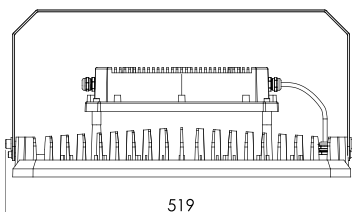
Side View

180W/200W/250W

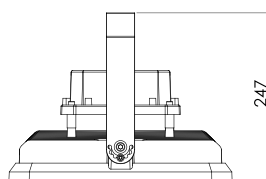


Front View

Body 5

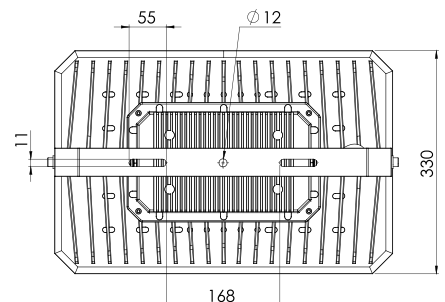


Elevated View



Side View

300W/350W/400W

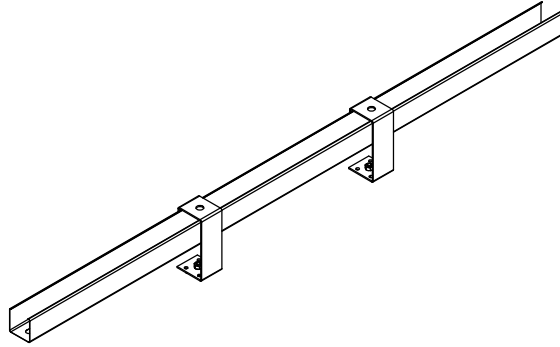
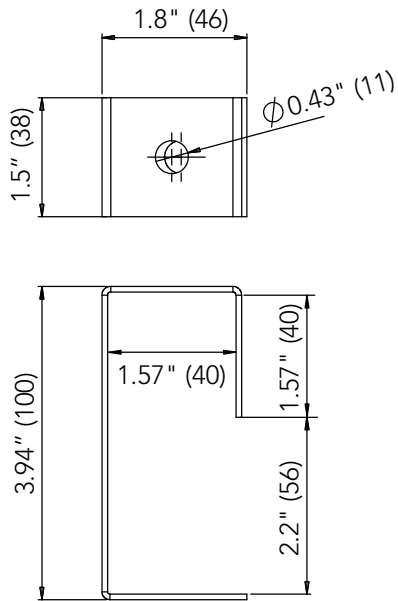


Front View

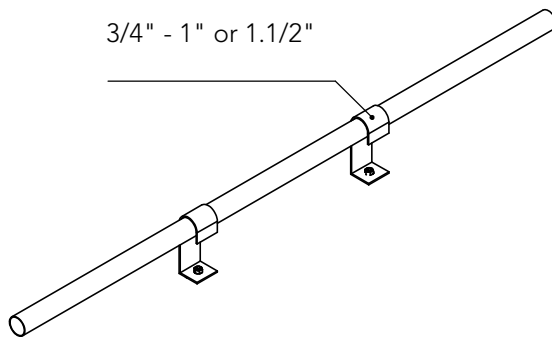
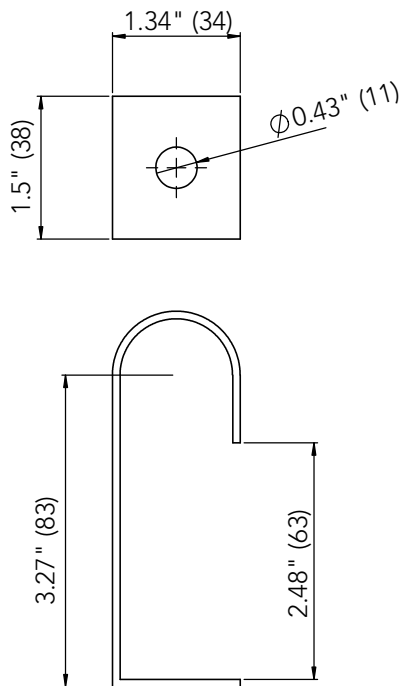
MOUNTING

Unit: inch/mm

US-Unistrut Support



PS-Pipe Support



ORDERING GUIDE

Example: AO-HEF01-30-LV-30K-10D-EB

Fixture Type	Wattage	Voltage	CCT	Beam Angle	Mounting Options
AO- <input type="text"/>	<input type="text"/>	<input type="text"/>	<input type="text"/>	<input type="text"/>	<input type="text"/>
HEF01 Harsh Environment Flood Light Series	30 30W 40 40W 60 60W 80 80W 100 100W 120 120W 150 150W 180 180W 200 200W 250 250W 300 300W 350 350W 400 400W	LV 110-277VAC HV 277-480VAC	30K 3000K 50K 5000K	10D 10° 30D 30° 60D 60° 90D 90° 120D 120° ASW Assymetric	EB Eye-Bolt CP1 Custom Paint Color PD Polycarbonate Diffuser TR Trunnion Bracket DM 0-10V Dimming PS34 3/4" Pipe Support PS1 1" Pipe Support PS112 1-1/2" Pipe Support US 1-5/8" Unistrut Support

Note: 1. Add color paint code to ordering number.

Actual performance may differ as a result of end-user environment and application. All values are design or calculated values measured in laboratory conditions. Specifications subject to change without notice.



Alpha Omega Lighting
www.alphaomegalighting.com

347 N. Church Street • Ripley, WV 25271
Phone: 304-786-4055 • Email: info@alphaomegalighting.com

Specifications are subject to change without notice.
Updated 11-14-2023